

Flo•Stat™ 2

...a marvelously simple solution to those common data organizing, information reducing, statistically-oriented reporting tasks faced everyday at work and school.

Direct entry and editing of data. No need to specify variable type prior to entry.

Toolbar simplifies, speeds procedures.

Statistical procedure window makes obtaining results foolproof!

The image displays several windows from the Flo•Stat 2 software interface. At the top is the 'General Social Survey' data entry window with a toolbar and a grid of data points. Below it is a 'Frequencies: General Social Survey' window showing a list of variables and a 'Display' section with checkboxes for various statistical measures like Mean, Std. Dev., and Percent. To the left is a 'Tabular Output: General Social Survey' window showing a table with columns for Value Label, Value, Frequency, Percent, and Valid Percent. At the bottom left is a 'Graphic: General Social Survey' window showing a bar chart titled 'Valid Percent Distribution OFFSIDE OF HOW PEOPLE GET AHEAD'. To the right of the bar chart is a small portrait window titled 'Kim Tyus' showing a photograph of a woman.

Easy-to-read tabular and graphic output ready for printing or pasting to reports.

Text, picture and movie files are easily stored and viewed.

Highlights

The easiest-to-learn and simplest-to-use stat package on the Mac

Small RAM footprint

Low cost

Reads & writes Macintosh® & PC SPSS™ portable files

Crunches big data sets

Handles long text strings-matrix cells store up to 8,000 characters

Banner crosstabs

Text, Pict & Mov files are stored as variables and viewable

Imports MaCATI™ data and questionnaire files

Educational discounts Plus student version and lab-packs

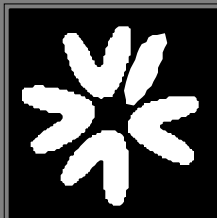
Nonparametrics

Student sampling exercises

Numerous mainframe-standard transformation and file management features

Frequency distributions generated on long strings

Variable names and value labels are easily added and modified



Senecio Software, Inc.

139 W. Wooster
Bowling Green, Ohio 43402
419.352.4371 fax: 419.354.7512
www.senecio.com info@senecio.com

© 1992-1998 Senecio Software, Inc. All Rights Reserved. Any product names or trademarks referenced are owned by their respective companies.



Technical Specifications

Reporting, sampling simulation and statistical routines

Reports: column listings of selected variables (values or labels) and univariate statistics
Samples: sampling exercises to generate N samples of N size from data set
Descriptives: univariate statistics in condensed column format
Frequencies: percent and frequency distributions, univariate statistics and multiple response analysis (Mult Response)
t-test: independent, paired and one-group t-test
One-way analysis of variance (ANOVA)
Crosstabulation: banner crosstabs, chi-square, gamma, Cramers V, cont. coeff., z-score
Nonparametrics: Mann-Whitney, Sign Test, Wilcoxon Signed-Rank, Kruskal Wallis, One Sample Chi-Square, Spearman Rank Correlation
Correlation and partial correlation
Simple and multiple regression

Transformation and file management features

Compute, Recode, If-Then
Select If
Sort Cases
Document file for appending project and miscellaneous notes
Integrated variable names, labels, and value labels which are easily added and changed

Input/Output options

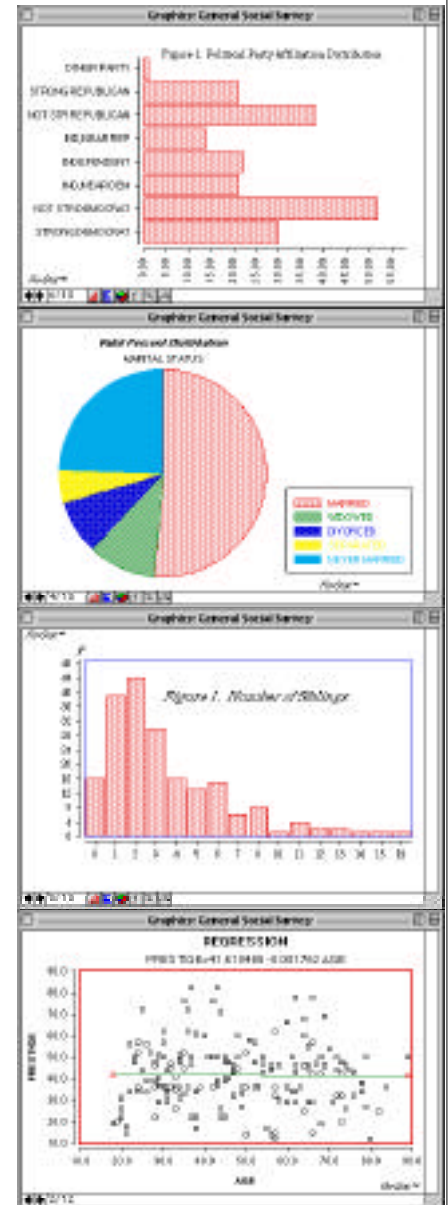
import or append tab-delimited ASCII files
import MaCATI questionnaire files and SPSS portable files
export tab-delimited ASCII files, SPSS portable file, and data dictionary files
print tabular and graphic output, or copy to clipboard
graphics: pie, column, bar, scattergram

Student version limits compared to full version

limited to 100 variables and 2,000 cases (full version processes 1,200 vars and an N of cases limited by disk space)
will not import or export SPSS portable files
will not append ASCII data files
QuickTime is not supported (i.e. video, picture and sound variables are not processed)

Required equipment and software

Two megabytes of RAM and a Mac II or newer
System 6.0.7 or higher, QuickTime required when processing PICT & Mov files



Adobe Monsanto Auburn University University of Toronto Chilton Research Services University of California at Santa Cruz Williams College University of Maryland College Park University of San Francisco University of Saskatchewan University of New Mexico The Research Spectrum The Mantis Group, Inc. Aarhus School of Business-Denmark University of Arkansas at Little Rock Oklahoma City University Wayne State University Apple User Group Connection University of Stirling-Scotland IntelliQuest Senechal-Jorgenson Dartmouth College WorkPoint, Inc. Naval Postgraduate School Reliability Ratings Bemidji State University Images USA University of Puerto Rico Texas A&M National Committee To Preserve Social Security and Medicare Griggs & Anderson Research University of Michigan University of Oklahoma Kaiser-Permanete Knowledge Inc. The Wyatt Company Marle Research University of Waikato-New Zealand University of London Adlai E. Stevenson College Ducker Research Company, Inc. University of South Alabama T.O.M.A. Research Tom DeNapoli Communications Iowa State University Quality Resources Proctor & Gamble Market Directions HealthPartners National Academy for State Health Policy The Mantis Group Now Software, Inc. Research Connection University of Western Sydney Brecktown and Asso-